

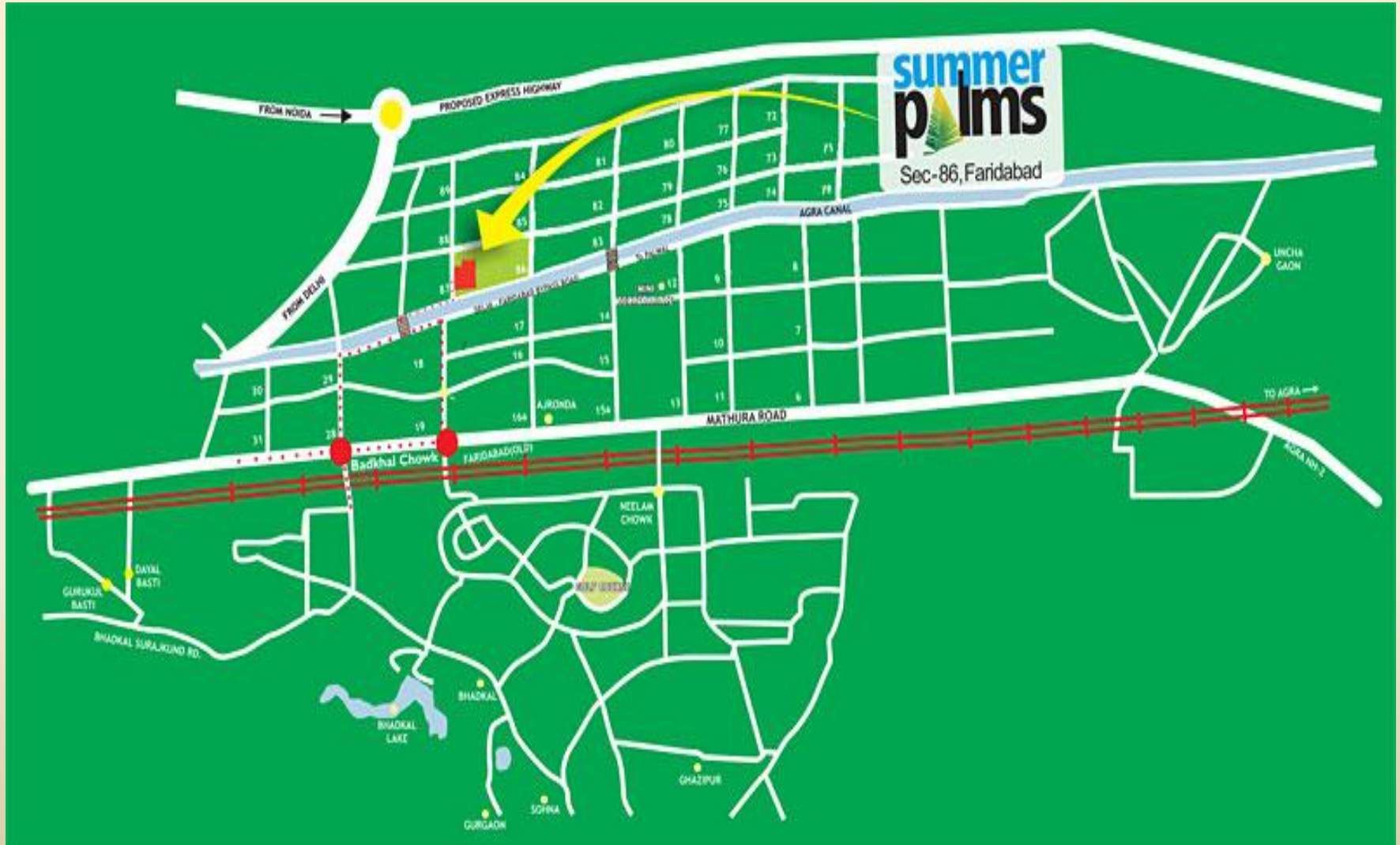


Sector-86, Faridabad

Introduction | Uppal's Jade

- Summer Palms, Sector-86, Faridabad is an architectural masterpiece that stands for a home nestled in serenity.
- Spread over a land area of 13.3 acres and houses 776 residences.
- Modern amenities such as an expansive central green, twin-level parking, utility balconies, swimming pools and a club house.

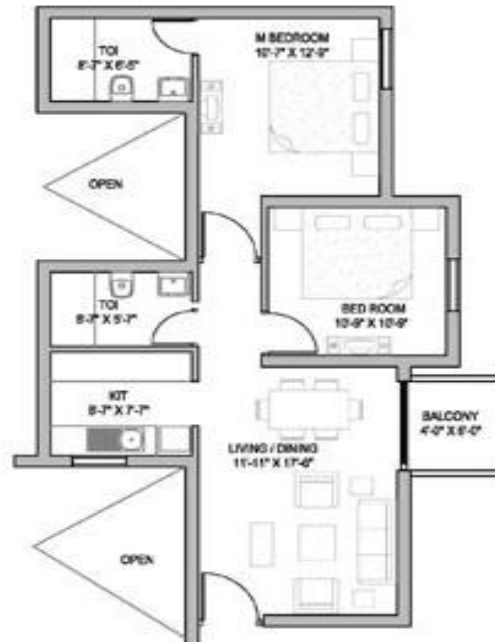
Location | Uppal's Jade



Site Plan | Uppal's Jade



Unit Plan | 850 Sq. Ft.



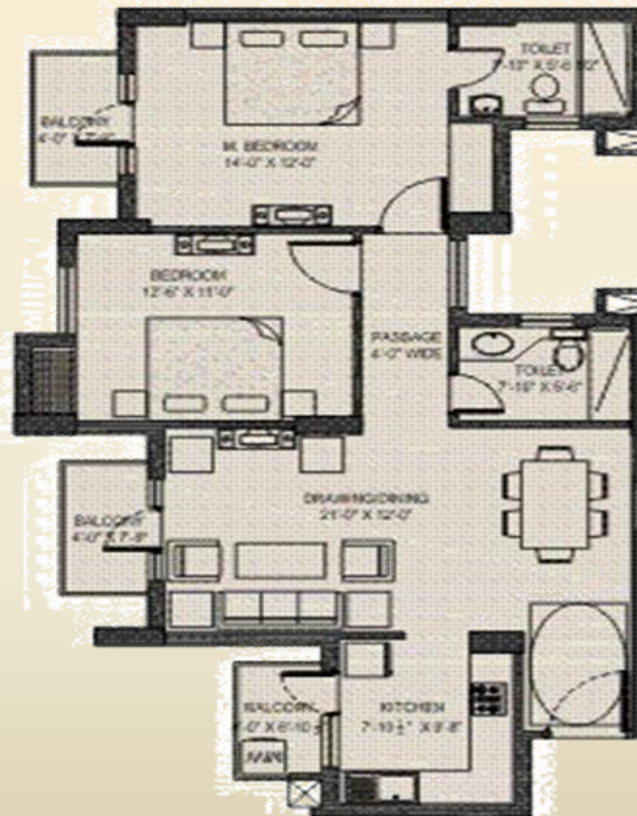
TYPE 2B+2T - 1

Unit Plan | 1180 Sq. Ft.



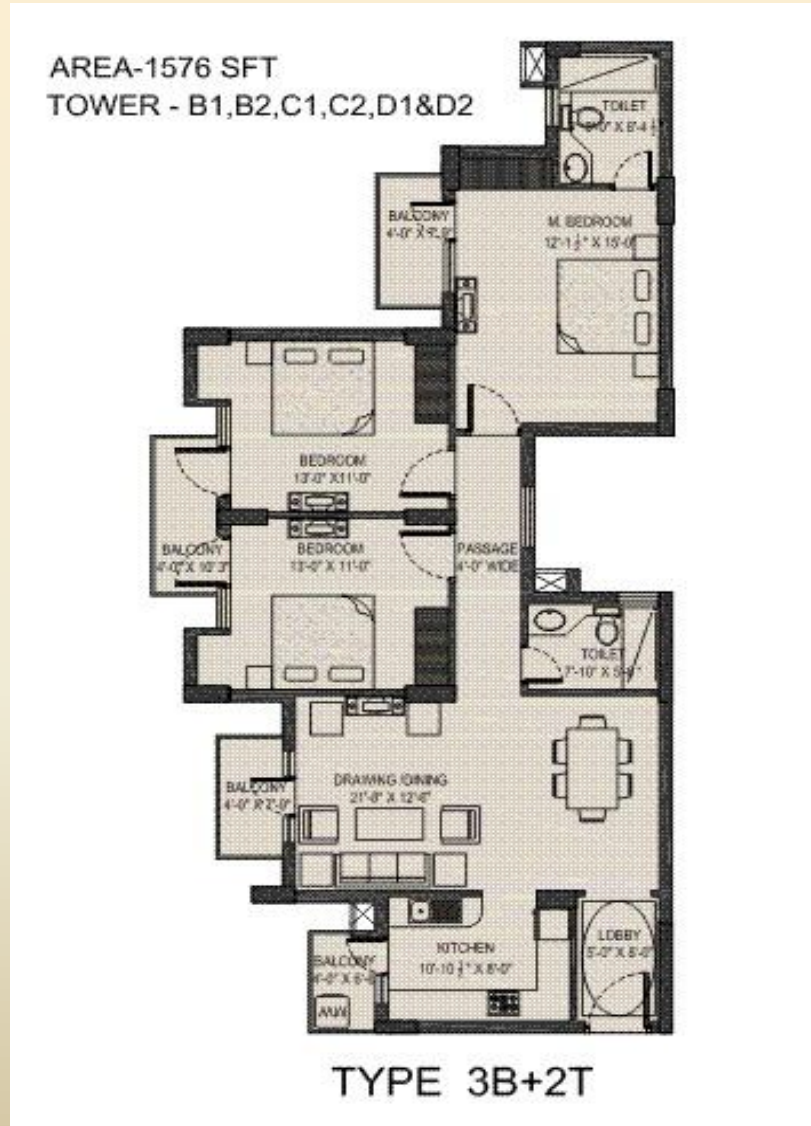
Unit Plan | 1248 Sq. Ft.

AREA-1248 SFT
TOWER - D1, D2



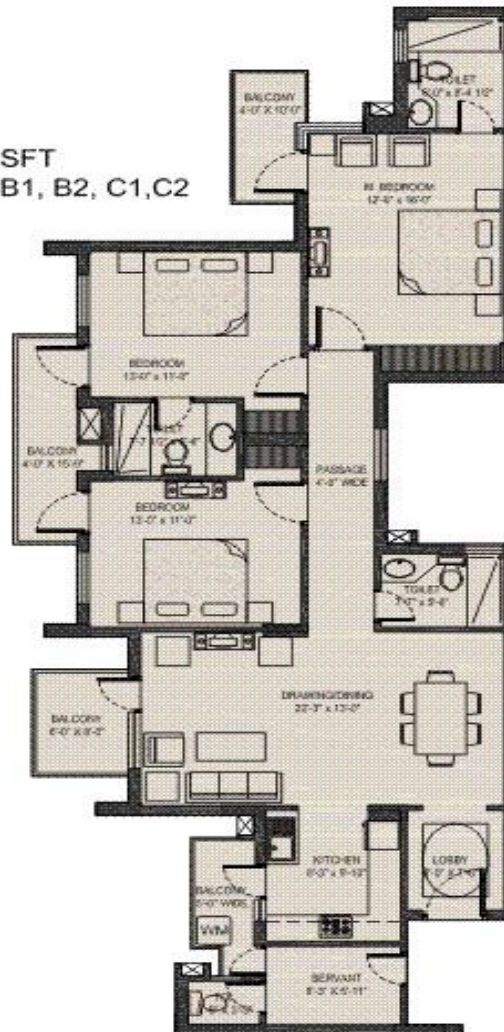
TYPE 2B+2T

Unit Plan | 1576 Sq. Ft.



Unit Plan | 1864 Sq. Ft.

AREA-1864 SFT
TOWER -A, B1, B2, C1,C2



TYPE 3B+3T+SQ

Thank you 😊



SCO 97, Sector-16, Faridabad

0129 – 4160501/601/701

www.kumarproperties.in